



TO LET



Middle Road, Harrow on the Hill, HA2

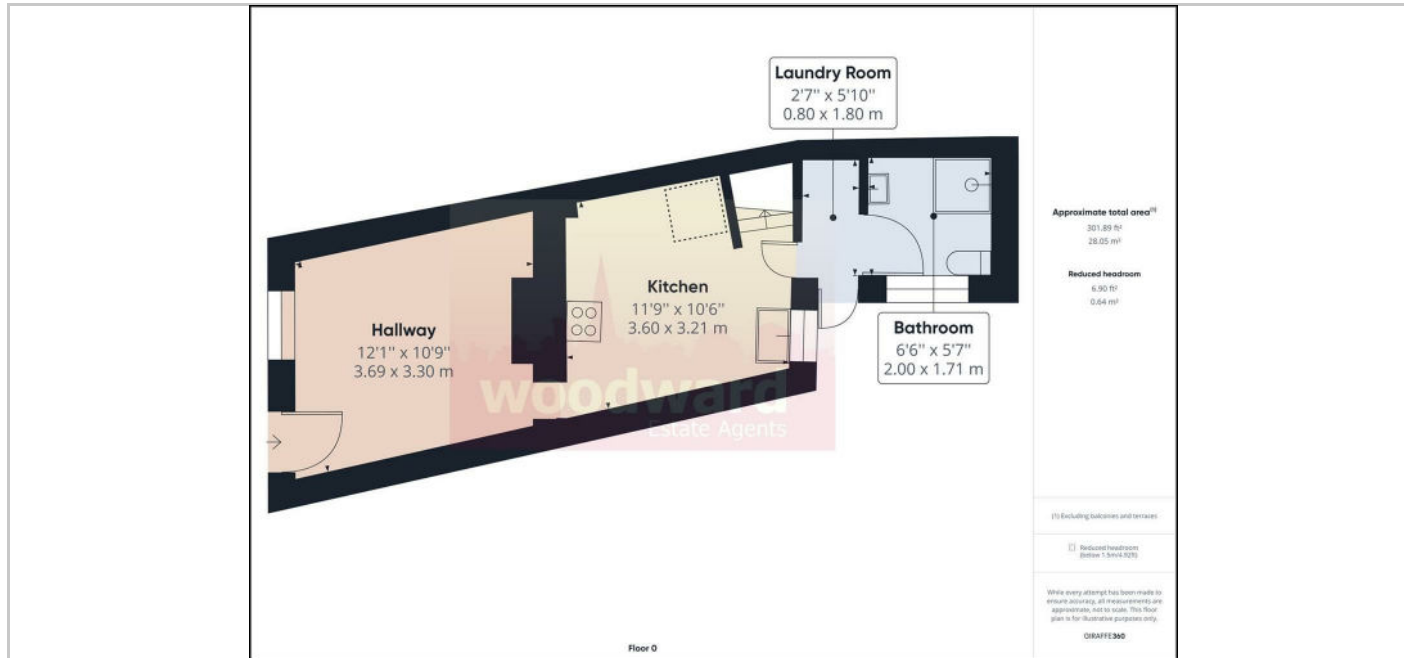
£1,500



- Part Furnished
- Kitchen/Diner
- Downstairs Shower Room
- Close to Public Transport
- Gas Hob
- Small Patio Garden

THE PROPERTY

A delightful cottage on the lower slopes off Harrow on the Hill. Close to Piccadilly Line, Waitrose & approx 1 mile from Harrow's Town Centre & Metropolitan Line station. A short walk from the Village Green and close to local schools. Lounge and kitchen/diner. Double & large single bedrooms. Shower room. Outside is a very small patio garden. Available part furnished end of March Pet friendly @ £1550 pcm. Council Tax Band: D Energy Rating: C72



SITUATION

Directions