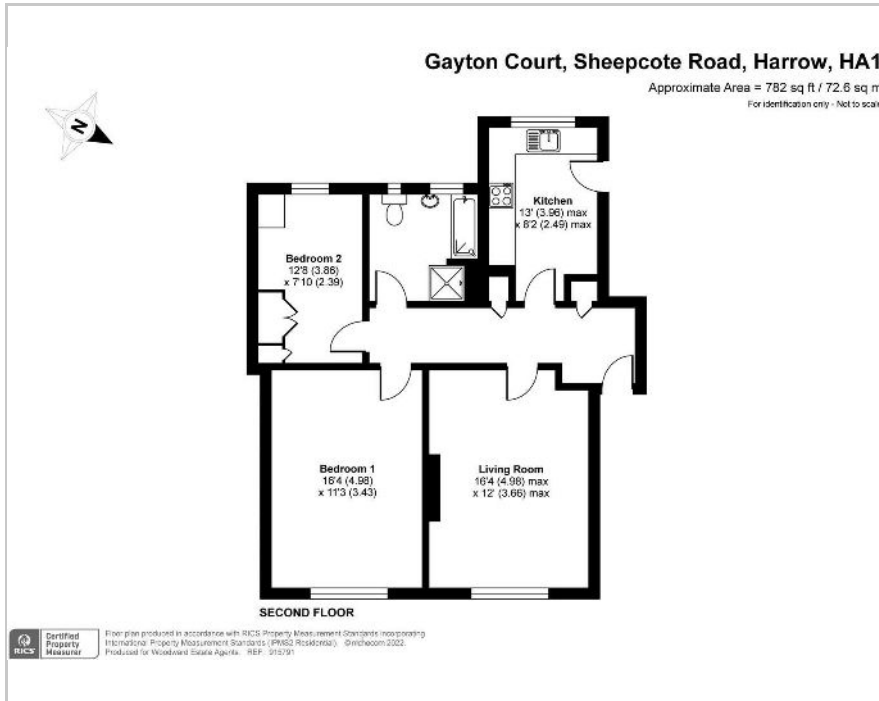


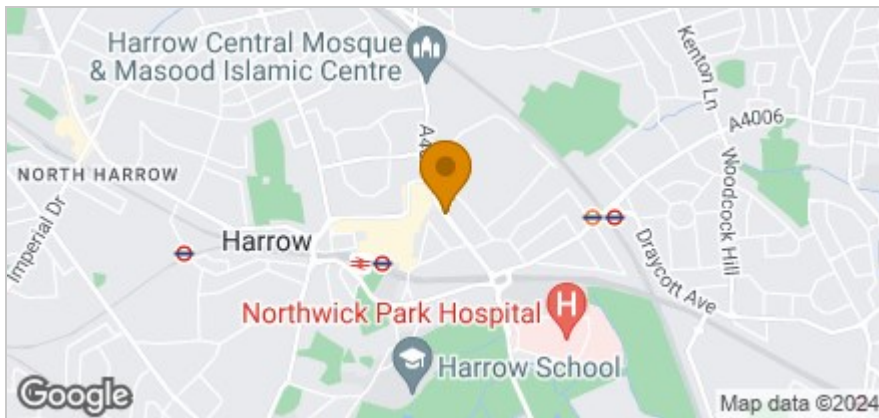


Sheepcote Road, Harrow, HA1
£400,000

Floor Plan



Area Map



Accommodation

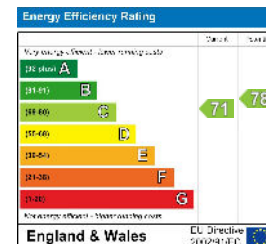
- Second floor
- Parking
- Shops and amenities nearby
- Fitted kitchen
- Close to public transport
- Communal garden



Viewing

Please contact our Woodward Estates Office on 020 8864 8844 if you wish to arrange a viewing appointment for this property or require further information.

Energy Efficiency Graph



These particulars, whilst believed to be accurate are set out as a general outline only for guidance and do not constitute any part of an offer or contract. Intending purchasers should not rely on them as statements of representation of fact, but must satisfy themselves by inspection or otherwise as to their accuracy. No person in this firm's employment has the authority to make or give any representation or warranty in respect of the property.