



TO LET

Cottage Close, Harrow, HA2

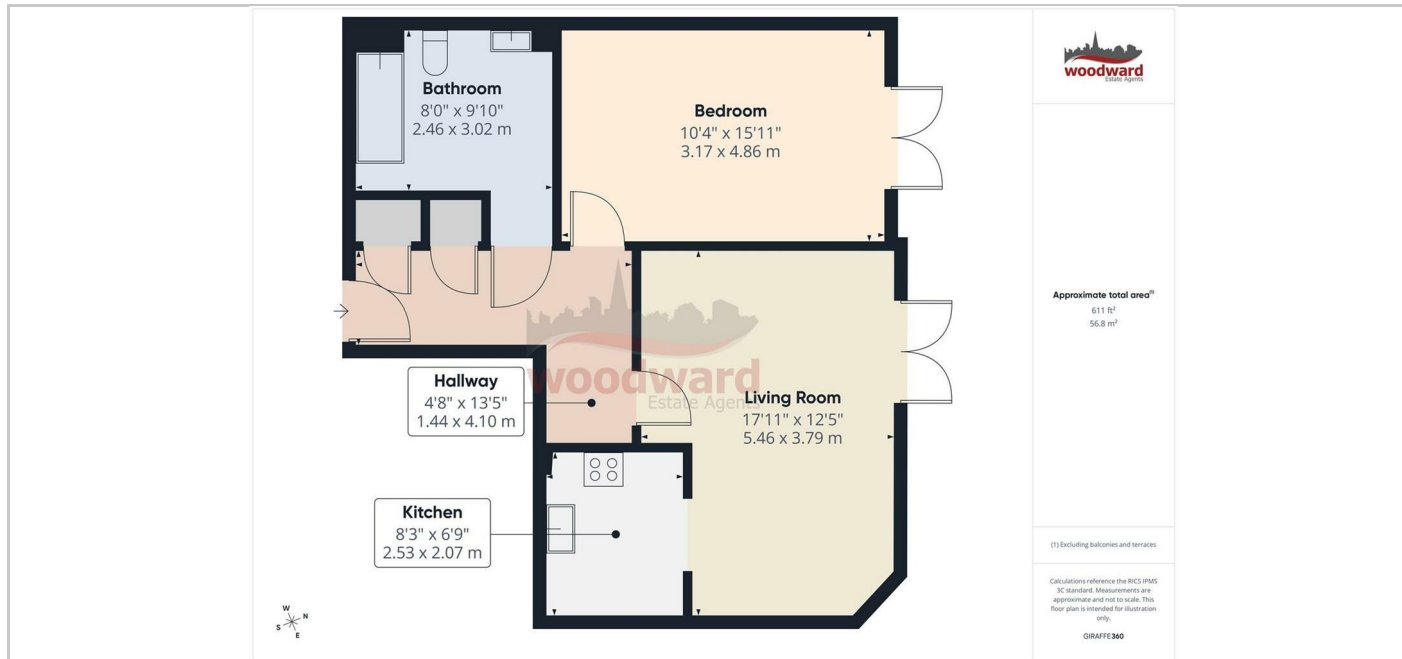
£1,500



- One bedroom Ground Floor Flat
- Modern Fitted Kitchen
- Lounge/Dining Room
- Direct Access to Communal Gardens
- Allocated Underground Parking Space
- Gym
- Concierge
- Close to Piccadilly & Metropolitan Line Station

## THE PROPERTY

A well presented one double bedroom ground floor flat situated in the sought-after gated development. Features include Modern Fitted Kitchen (gas hob), bright living room with space for dining opens directly onto communal garden, Concierge, Gymnasium, Allocated underground parking with electric charging points available. Conveniently located, the property is within walking distance (Piccadilly Line) station and easy access to (Metropolitan/Chiltern Line), independent coffee bars, pubs, restaurants, and a nearby Waitrose supermarket. Available mostly unfurnished CTB: D EPC: C 77



## SITUATION

## Directions