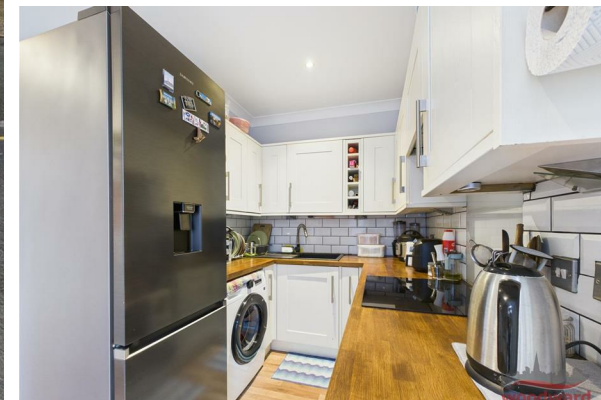




TO LET

Welldon Crescent, Harrow, HA1

£400,000



- Private Garden
- Ground Floor
- Share of Freehold
- Driveway

THE PROPERTY

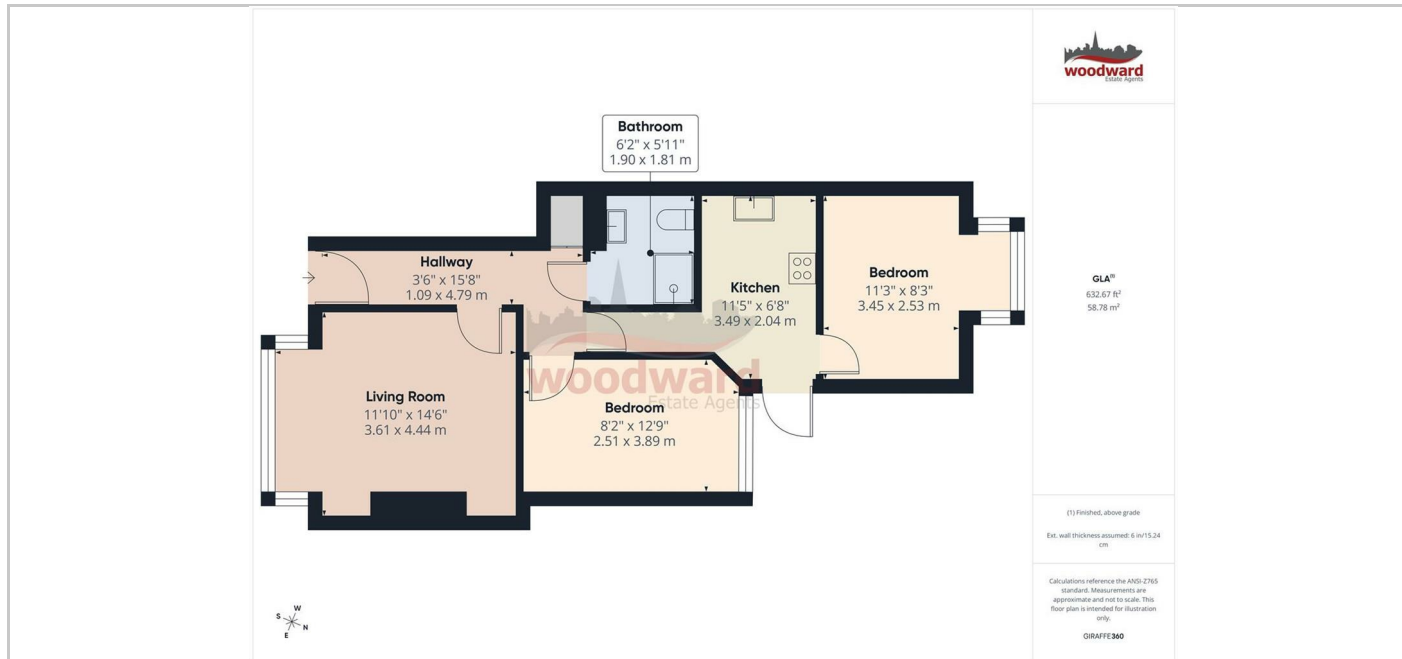
Set on the ground floor of a traditional building on Welldon Crescent, this two bedroom maisonette offers a calm and well balanced plan with the rare advantages of a private garden and off street parking. The accommodation is generous for its type and combines everyday practicality with the solidity and character of a period home.

The maisonette opens into a central hallway that gives clear access to each room. The living room sits to the front of the property and is defined by a broad bay window that draws in natural light and gives the space a relaxed, open feel. To the middle, the kitchen is neatly arranged with good storage and worktop space, positioned for ease of access to the garden.

Both bedrooms are well proportioned doubles. The principal bedroom offers ample space for wardrobes and furnishings, while the second bedroom is quietly positioned and works equally well as a guest room or study. A bathroom sits off the hallway, completing the internal layout.

Outside, the private garden provides a valuable extension of the living space, suitable for seating, planting or quiet retreat. Off street parking adds further convenience, and the share of freehold contributes to a sense of long term security and control.

The location is well judged for both daily life and commuting. Harrow town centre is close at hand, offering a broad range of shops, cafés and restaurants, alongside supermarkets and well regarded schools. Harrow on the Hill and Harrow and Wealdstone stations provide swift and varied connections into central London.



SITUATION

Directions

The Old Fire Station 90 High Street, Harrow-on-the-Hill, Middlesex, HA1 3LP
 Tel: 020 8864 8844 Email: info@woodward.co.uk <https://www.woodward.co.uk>