



Hargrave Drive, Harrow, HA1

£440,000



- Large Private Balcony
- En Suite to Principle Bedroom
- Open Plan Kitchen and Living Area
- Walking distance to Headstone Lane station and Harrow & Wealdstone Stations
- Close to local shops and amenities

## THE PROPERTY

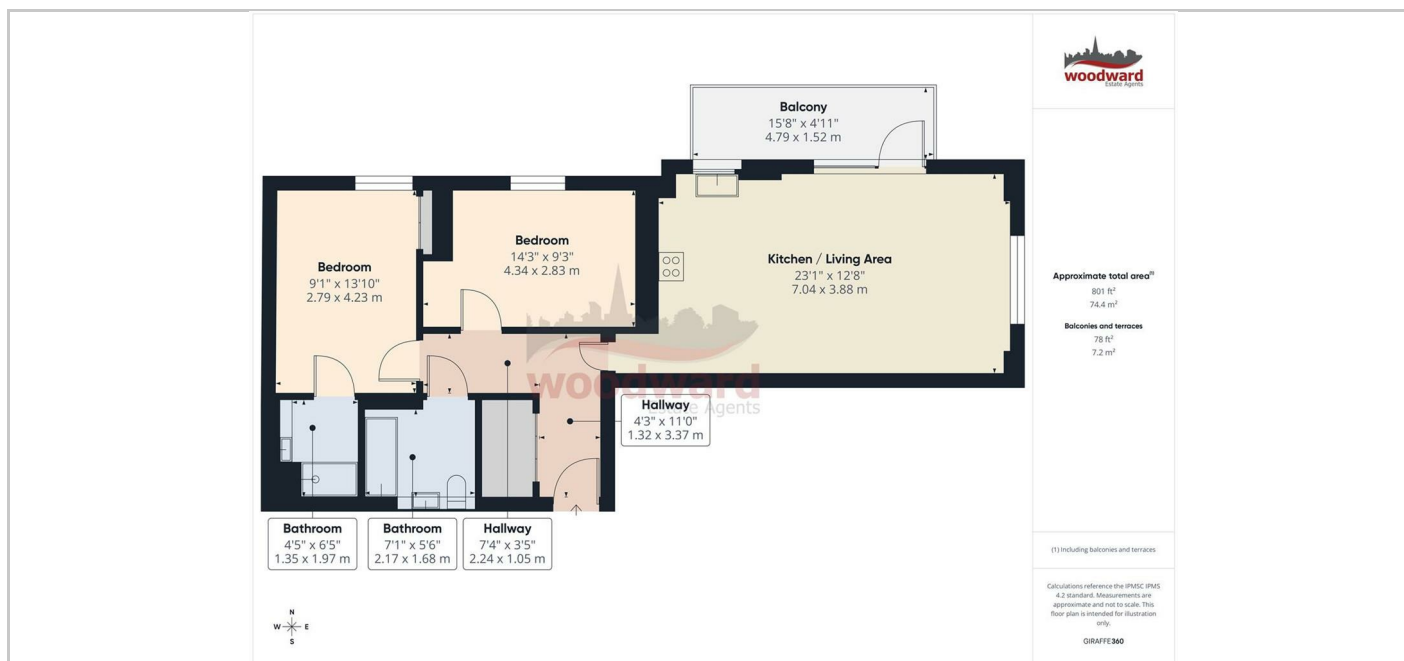
Occupying a well placed position within Eastman Village, this two bedroom apartment at Hazeview Apartments offers a generous internal footprint and a calm, well resolved interior. The accommodation extends to approximately 801 sq ft and is presented in excellent condition throughout.

An entrance hallway with fitted storage leads through to the main living space, where the kitchen, dining and seating areas are arranged as one cohesive room. The kitchen is cleanly detailed with contemporary units and integrated appliances, while the living area opens directly onto a large private balcony. This outdoor space extends the apartment naturally and provides room for seating and planting, with open views across the development.

Both bedrooms are well sized doubles, positioned away from the living space for a sense of privacy. The principal bedroom benefits from fitted wardrobes and a neatly finished en suite shower room. A second bathroom serves the guest bedroom and wider apartment, finished in a modern, neutral palette. Storage is particularly strong throughout, contributing to the apartment's sense of order and ease.

Eastman Village offers a carefully curated residential environment with local shops and amenities close by. Headstone Lane and Harrow and Wealdstone stations are within walking distance, providing strong transport links for commuting and access across London.

## SITUATION



## Directions

The Old Fire Station 90 High Street, Harrow-on-the-Hill, Middlesex, HA1 3LP  
Tel: 020 8864 8844 Email: [info@woodward.co.uk](mailto:info@woodward.co.uk) <https://www.woodward.co.uk>