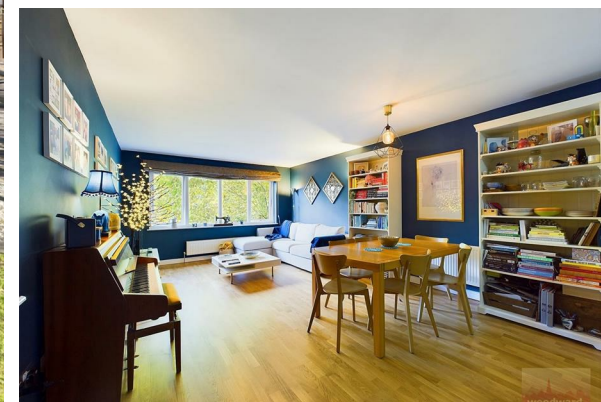




TO LET

Wood End Road, Harrow, HA1

£1,900



- 2 Double Bedroom
- Bathroom & En Suite Shower Room
- Parking Space
- Close to Piccadilly Line & British Rail Station
- First Floor Flat
- Open Plan Fitted Kitchen Room
- Communal Garden



FIRST FLOOR
818 SQ FT / 76.0 SQ M

THE PROPERTY

This beautifully presented and spacious two double bedroom first-floor Flat, with contemporary open-plan kitchen connecting to the living room with natural light and stunning views of the communal gardens and cricket fields , bathroom, en-suite shower room and parking for one car. Located within short walk of a choice of Piccadilly Line & BR stations at Sudbury Hill. Also close to local shops whilst approximately a mile from excellent shopping facilities at both Harrow & Wembley. Available Part furnished from 1st October. CTB: D EPC: C80

SITUATION

Directions