



Crown Street, Harrow on the Hill, HA2

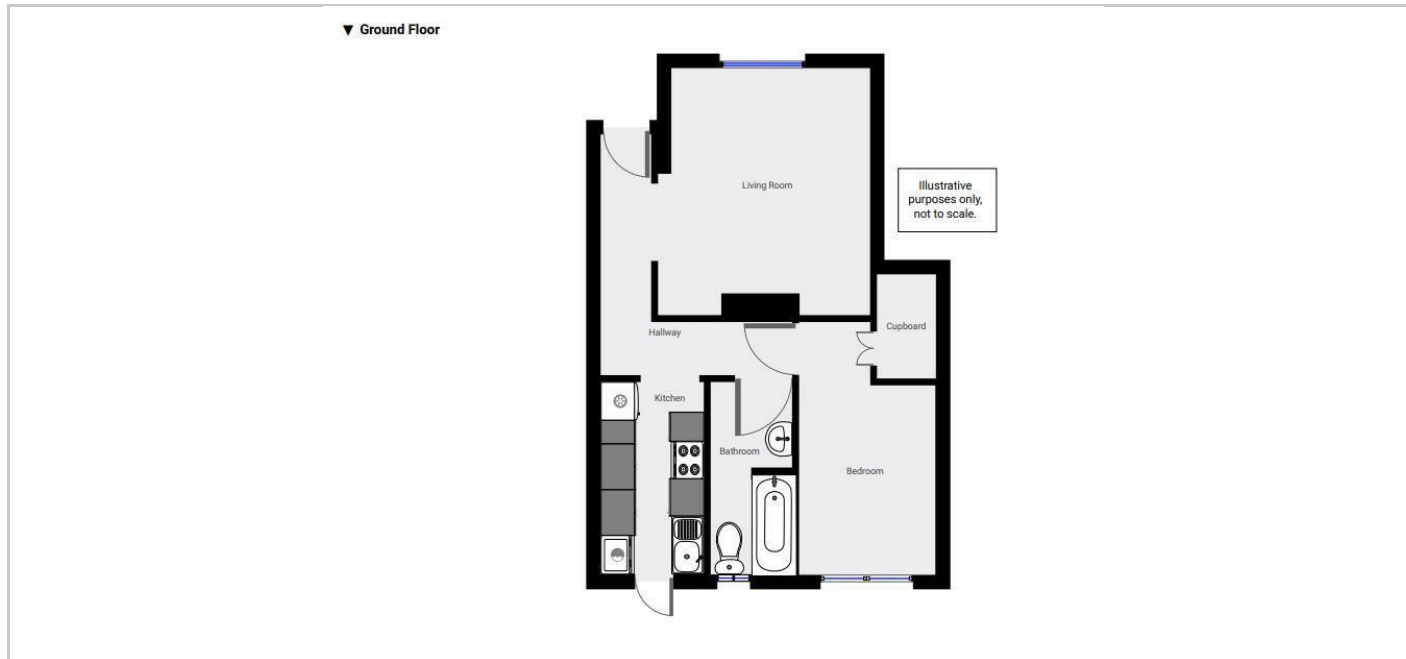
£1,350 Per month



- One Bedroom Ground Floor Flat
- Direct access to a small paved shared garden
- Unfurnished
- Modern Fitted Kitchen
- Conveniently located to Metropolitan Line/BR & Piccadilly Line

THE PROPERTY

This 1 bed ground floor flat offered with Lounge, separate modern fitted kitchen, bathroom, double bedroom, Direct access to a small paved shared garden. Located just a short walk to the Village Green bars, restaurants & convenience stores, also within easy access to Harrow's shops & Metropolitan Line/BR & Piccadilly Line stations & Waitrose. Available unfurnished mid July Council Tax Band: C EPC Rating: C73



Directions

SITUATION