



TO LET

Salisbury Road, Harrow, HA1

£349,950



- Residents Parking
- Communal Gardens
- First Floor

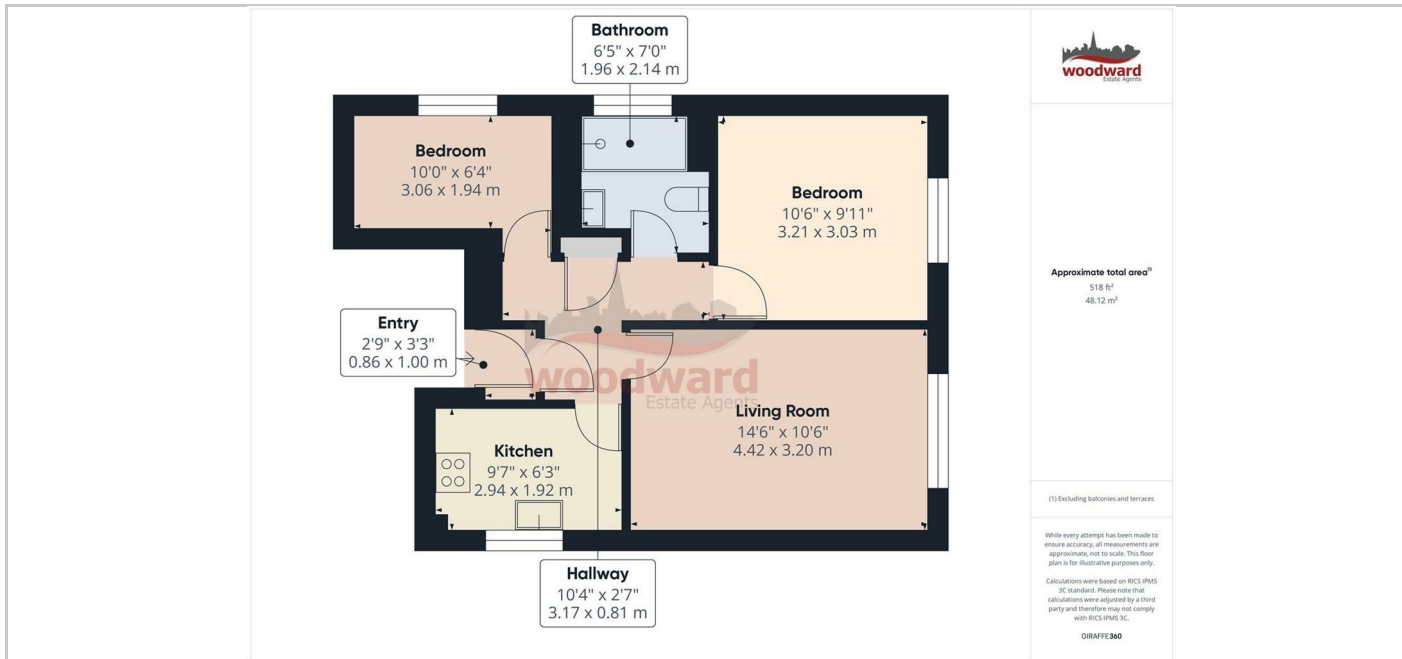
THE PROPERTY

Well-Presented Two-Bedroom Flat with Stunning Park Views & Excellent Transport Links

Situated in the heart of Central Harrow, this well-presented first-floor two-bedroom flat offers comfortable and convenient living with beautiful views overlooking Harrow Recreation Ground.

The property features two generous double bedrooms, gas central heating, and double-glazed windows, ensuring warmth and energy efficiency. Residents also benefit from off-street parking and well-maintained communal gardens to the rear.

Located within walking distance of Harrow Town Centre, the flat provides easy access to a variety of bars, coffee shops, restaurants, and shopping facilities. Excellent transport links are nearby, with both Harrow on the Hill Tube Station and Harrow & Wealdstone Station offering National Rail and Underground services for quick connections to Central London and beyond.



SITUATION

Directions

The Old Fire Station 90 High Street, Harrow-on-the-Hill, Middlesex, HA1 3LP
 Tel: 020 8864 8844 Email: info@woodward.co.uk <https://www.woodward.co.uk>