



TO LET

Mount Park Road, Harrow on the Hill, HA1

£2,000

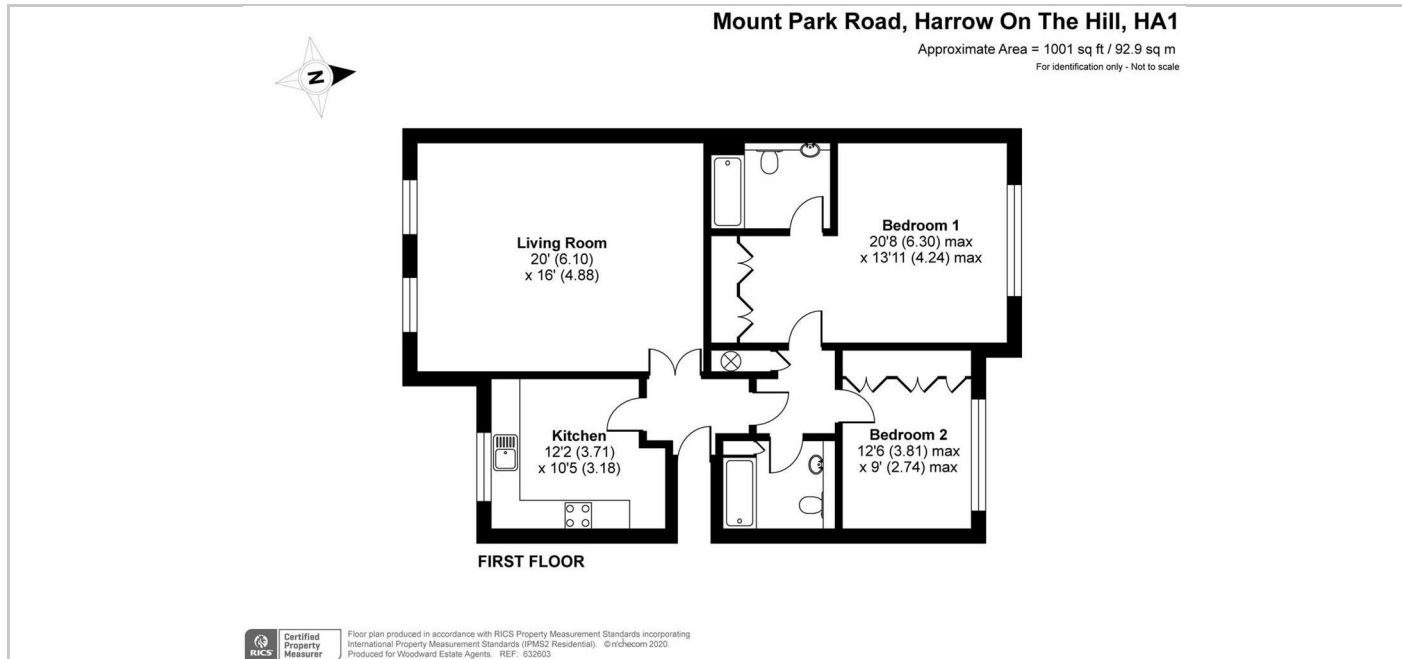




- Main Bedroom with Dressing Room
- Family Bathroom & En-Suite
- Communal Gardens
- Private Gated Mount Park Estate
- 20' Lounge/Dining Room
- Fitted Kitchen with Gas Hob & Dish Washer
- Part Furnished
- Close to Public Transport

## THE PROPERTY

Larger than average 2 bedroom, 2 bathroom 1st floor flat with 20' Living Room & Main Bedroom with dressing area & en-suite, Fitted Kitchen (incl. gas hob & dish washer), Family Bathroom & Communal Gardens. Located within the private gated Mount Park Estate, closest to Piccadilly Line & approx 1 mile from Harrow on the Hill Met. Available Part Furnished 5th April. Council Tax Band: F Energy Rating: C77



## SITUATION

## Directions

The Old Fire Station 90 High Street, Harrow-on-the-Hill, Middlesex, HA1 3LP  
Tel: 020 8864 8844 Email: [info@woodward.co.uk](mailto:info@woodward.co.uk) <https://www.woodward.co.uk>