



35 Sheepcote Road, Harrow, HA1

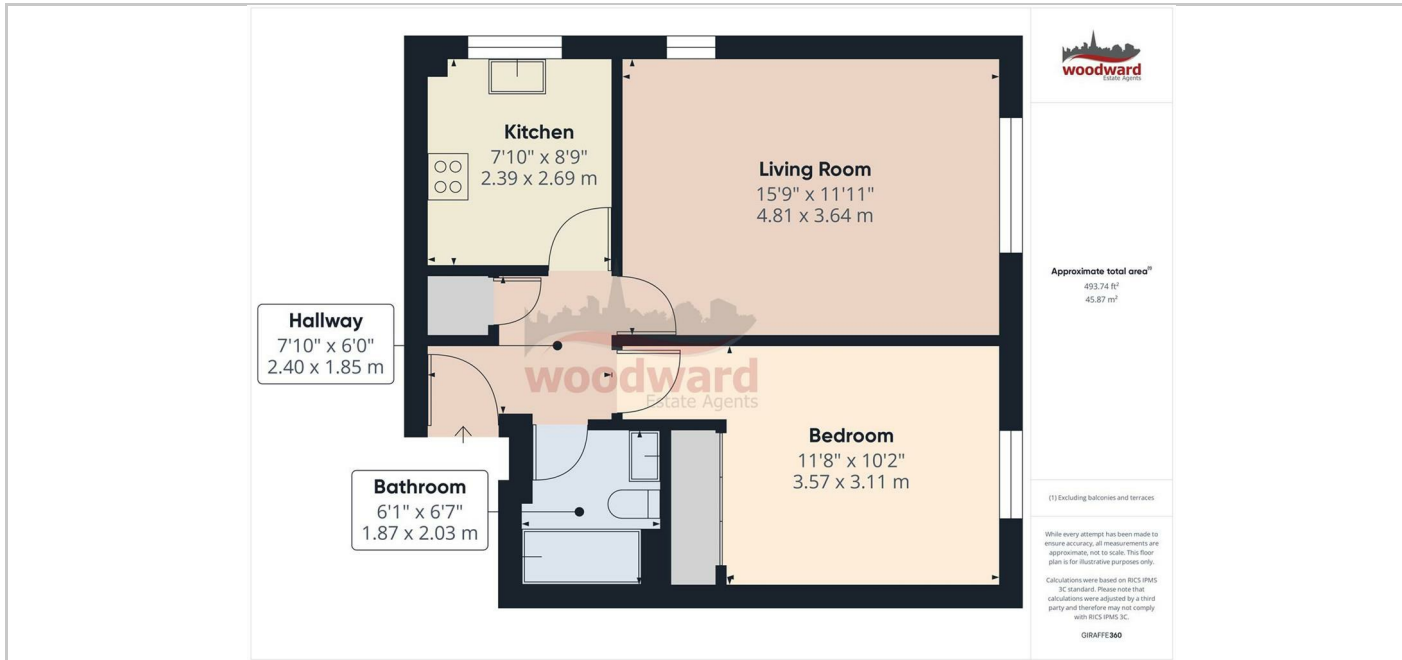
£1,400 Per month





## THE PROPERTY

A well-presented ground floor flat, recently redecorated and with new carpets, featuring a separate kitchen with a gas hob, a spacious double bedroom with fitted wardrobes, , and a bathroom. Residents' permit parking is available subject to availability. Ideally situated, this flat is just a two-minute walk from Harrow's shopping centre and within easy walking distance of Harrow-on-the-Hill and Northwick Park Metropolitan Line stations, as well as Kenton BR/Bakerloo station. Available NOW. Mostly unfurnished. Council Tax Band: C EPC Rating: C69



## SITUATION

## Directions

The Old Fire Station 90 High Street, Harrow-on-the-Hill, Middlesex, HA1 3LP  
Tel: 020 8864 8844 Email: [info@woodward.co.uk](mailto:info@woodward.co.uk) <https://www.woodward.co.uk>