



TO LET

Mount Park Road, Harrow on the Hill, HA1

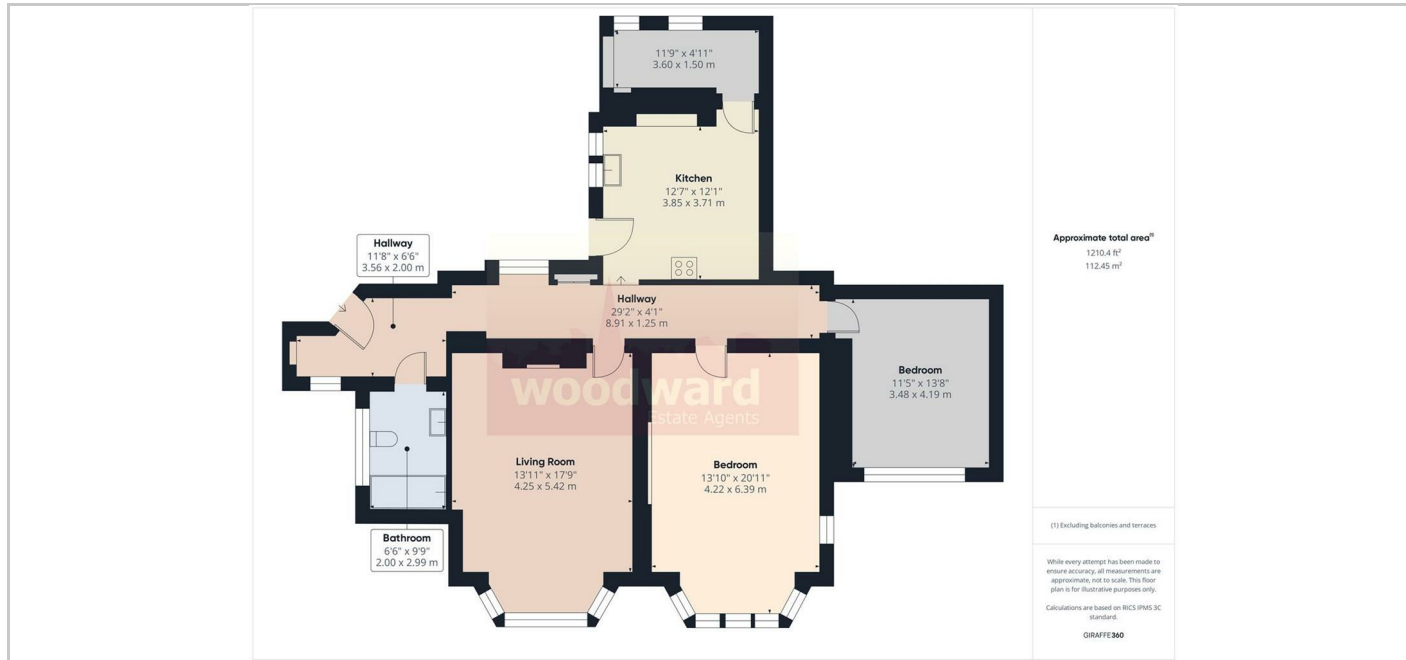
£2,500



- Spacious 2 double Bedroom
- Fitted Kitchen/Breakfast Room
- Ground Floor Flat
- Utility Room
- Modern Bathroom
- Private Gated Development
- Communal Garden
- Walking Distance to Piccadilly Line Station

THE PROPERTY

Available Now. Spacious 2 double bedroom ground floor flat in this gated development on the exclusive Mount Park private Estate. The property is offered with features including Fitted Kitchen/Breakfast Room including gas hob, new fridge/freezer, Utility Room, Lounge/Dining Room, Family Bathroom, Communal Gardens, Security Entryphone & Hardwood Flooring. Ideally located within walking distance of Piccadilly Line & Waitrose & approx 1 mile from Harrow's shops & Metropolitan Line station. Pet Friendly Available Part Furnished. CTB: E EPC: C65



SITUATION

Directions

The Old Fire Station 90 High Street, Harrow-on-the-Hill, Middlesex, HA1 3LP
 Tel: 020 8864 8844 Email: info@woodward.co.uk <https://www.woodward.co.uk>