



TO LET

Elmfield Close, Harrow on the Hill, HA1

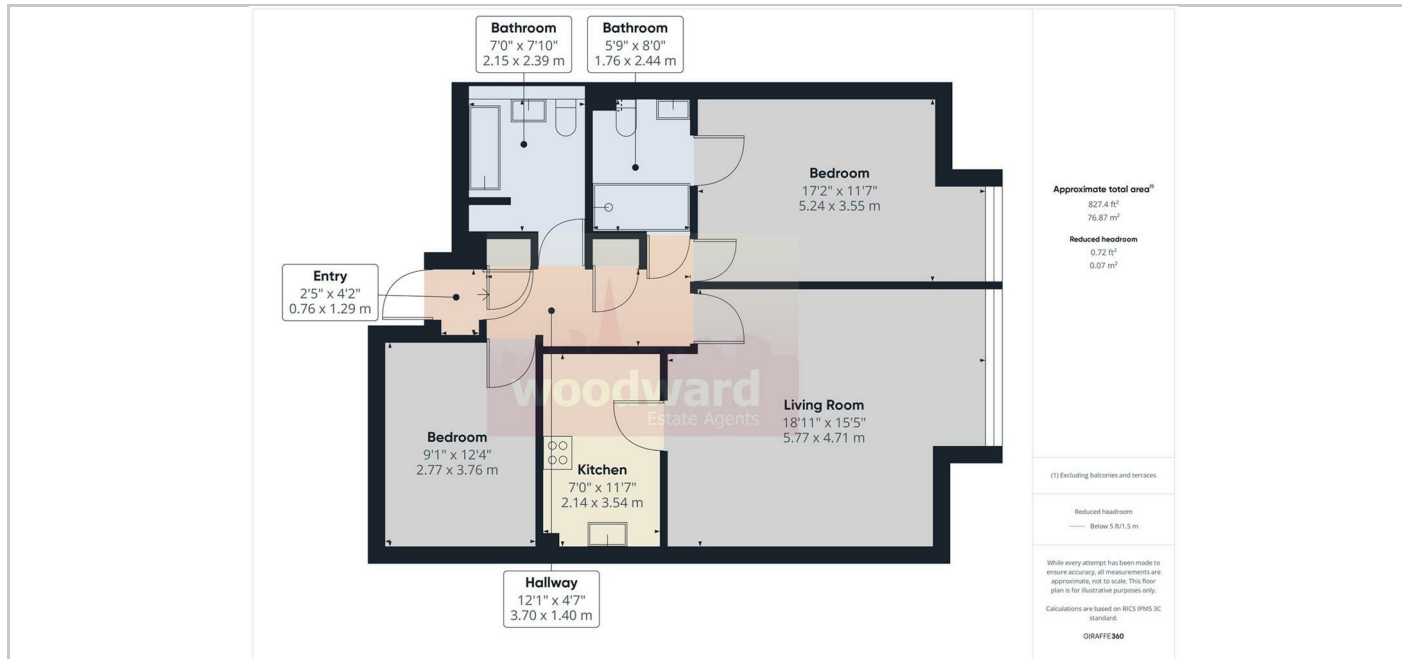
£1,800 Per month



- 2 Double Bedroom Top Floor Flat with lift access
- New Bathroom
- Lounge/Dining Room
- Unfurnished
- New Fitted Kitchen
- En-Suite Bathroom to Main Bedroom
- Garage
- Easy access to Piccadilly/BR Line & Metropolitan Line stations

## THE PROPERTY

Beautifully presented and recently refurbished 2 double bedroom top floor flat in a prestigious Hilltop development with Newly Fitted Separate Kitchen, New Bathroom, En-Suite Bathroom to Main Bedroom, Lounge/Dining Room, Lift Access, Garage & Communal Gardens. Close to Village Green & access to Piccadilly Line & Metropolitan Line stations, Waitrose and approx 1 mile from Harrow's shopping centre. Available unfurnished NOW Council Tax Band: F Energy Rating D63



## SITUATION

## Directions