



TO LET

Ashbourne Avenue, Harrow, HA2

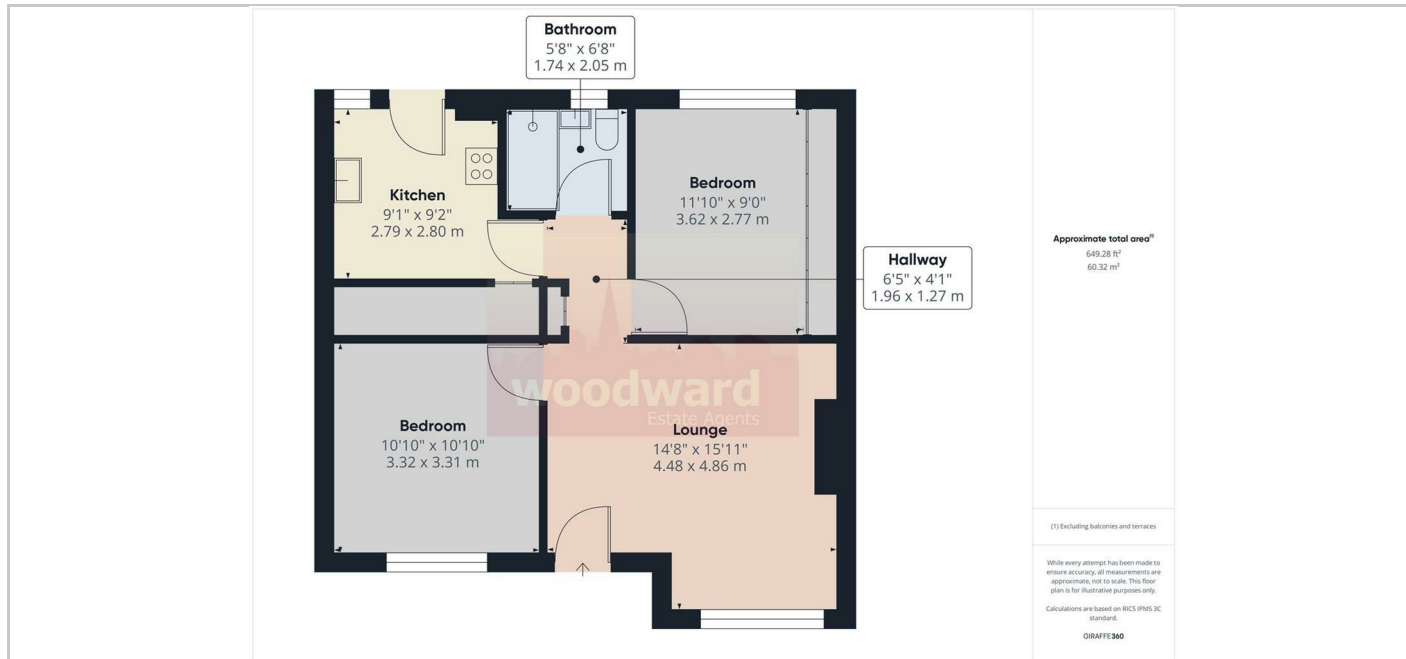
£2,000 Per month



- 2 Double Bedroom Ground Floor Maisonette
- New Fitted Kitchen including dish washer
- New Shower Room
- Spacious Lounge
- Small Patio Garden
- Walking distance to Piccadilly Line Station
- Unfurnished

## THE PROPERTY

A newly refurbished to a high specification a ground floor 2 double bedroom Maisonette with a New kitchen including dish washer, Shower Room, Large lounge, laminate flooring, & small patio garden overlooking open fields. Located in a cul-de-sac within a short walking distance of Piccadilly Line station. Also close to Waitrose and easily accessible to Harrow's Town Centre with excellent shopping facilities & Metropolitan Line/BR station. Available NOW Unfurnished Energy Rating: C69 Council Tax Band: C



## SITUATION

## Directions