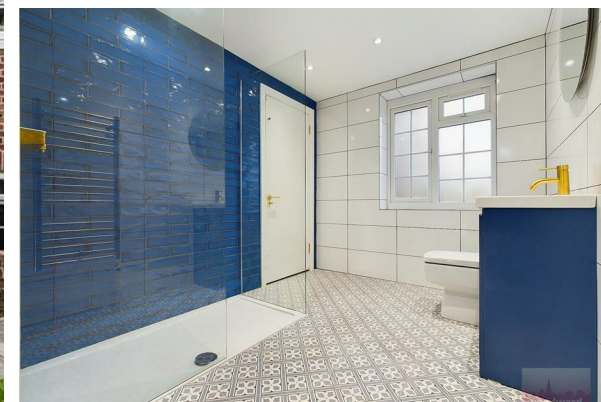




TO LET

Sudbury Hill, Harrow on the Hill, HA1

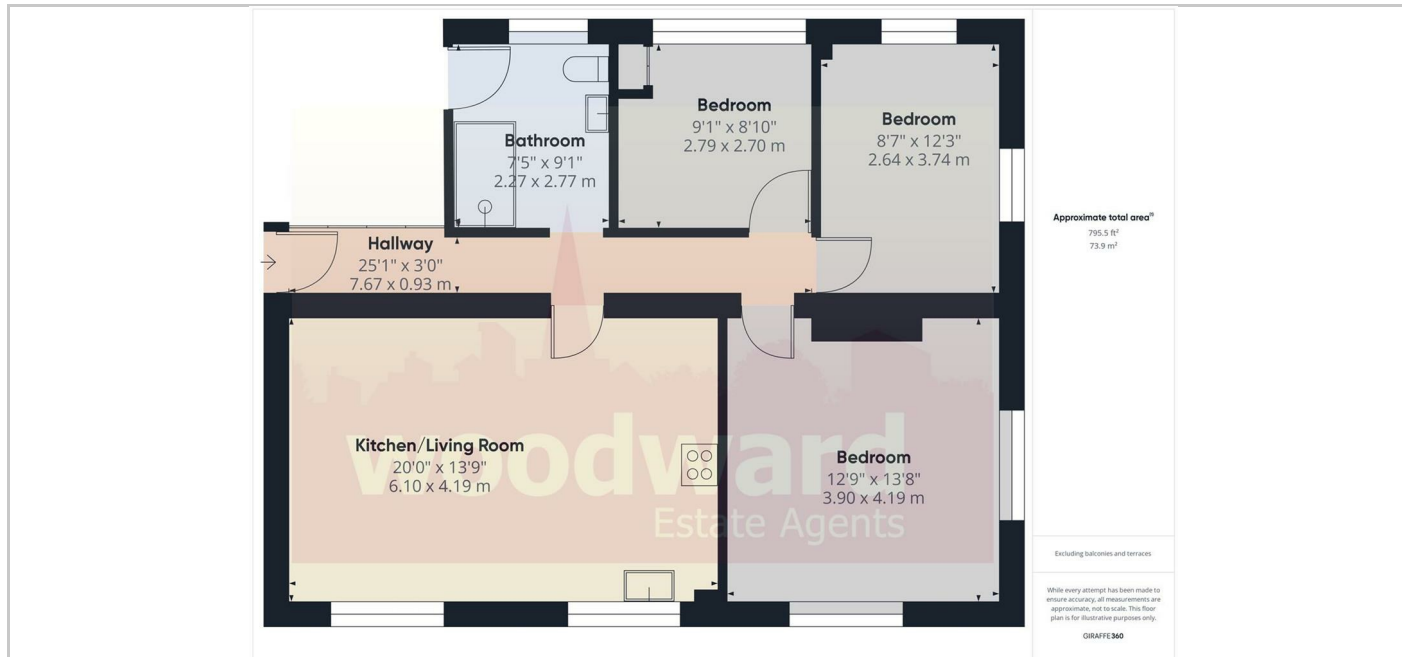
£1,900 Per month



- 3 Bedroom Ground Floor Flat
- New Open Plan fitted Kitchen
- New Shower Room
- Communal Gardens
- Use of Tennis Court
- Close to Piccadilly Line Station/Rail

THE PROPERTY

A stunning 3 bedroom lower ground floor flat which has been recently refurbished to a high specification and offered with open-plan Fully Fitted Kitchen/Living Area, Modern Shower Room, Communal Gardens, Permit Parking and use of Tennis Courts. Ideally located for Sudbury Hill Piccadilly line station, British Rail and local bus routes and approximately 1 mile of Harrow's excellent Town Centre shopping facilities and Metropolitan Line/BR station. Available NOW Un- Furnished Council Tax Band: D EPC: D66



SITUATION

Directions