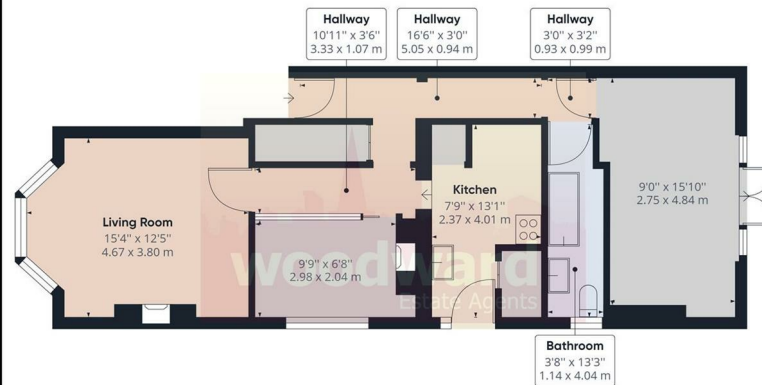




Welldon Crescent, Harrow, HA1

£1,750

- Pet Friendly!
- Own Private Rear Garden
- Family Bathroom
- Close to Metropolitan Line/BR
- Walking distance to local schools
- Ground Floor Maisonette
- Modern Fitted Kitchen
- Permit Street Parking
- Harrow & Wealdstone BR/Overground/Bakerloo
- Gas Central Heating



Approximate total area⁽¹⁾
674.91 ft²
62.70 m²

(1) Excluding balconies and terraces

While every attempt has been made to ensure accuracy, all measurements are approximate, not to scale. This floor plan is for illustrative purposes only.

GIRAFFE360

THE PROPERTY

A 2 bedroom ground floor maisonette offered in good condition and located just a short walk from Harrow's Town Centre & Metropolitan Line/BR station. Harrow & Wealdstone BR/Overground/Bakerloo. The accommodation comprising Lounge, fully fitted modern kitchen with range cooker and dish washer, a double & a single bedroom & family bathroom With period features and high ceilings, low maintenance private rear garden & permit street parking. Available NOW. PET FRIENDLY. Council Tax Band: D EPC: D57

SITUATION

Directions

The Old Fire Station 90 High Street, Harrow-on-the-Hill, Middlesex, HA1 3LP
Tel: 020 8864 8844 Email: info@woodward.co.uk <https://www.woodward.co.uk>