



TO LET

Whitehall Road, Harrow, HA1

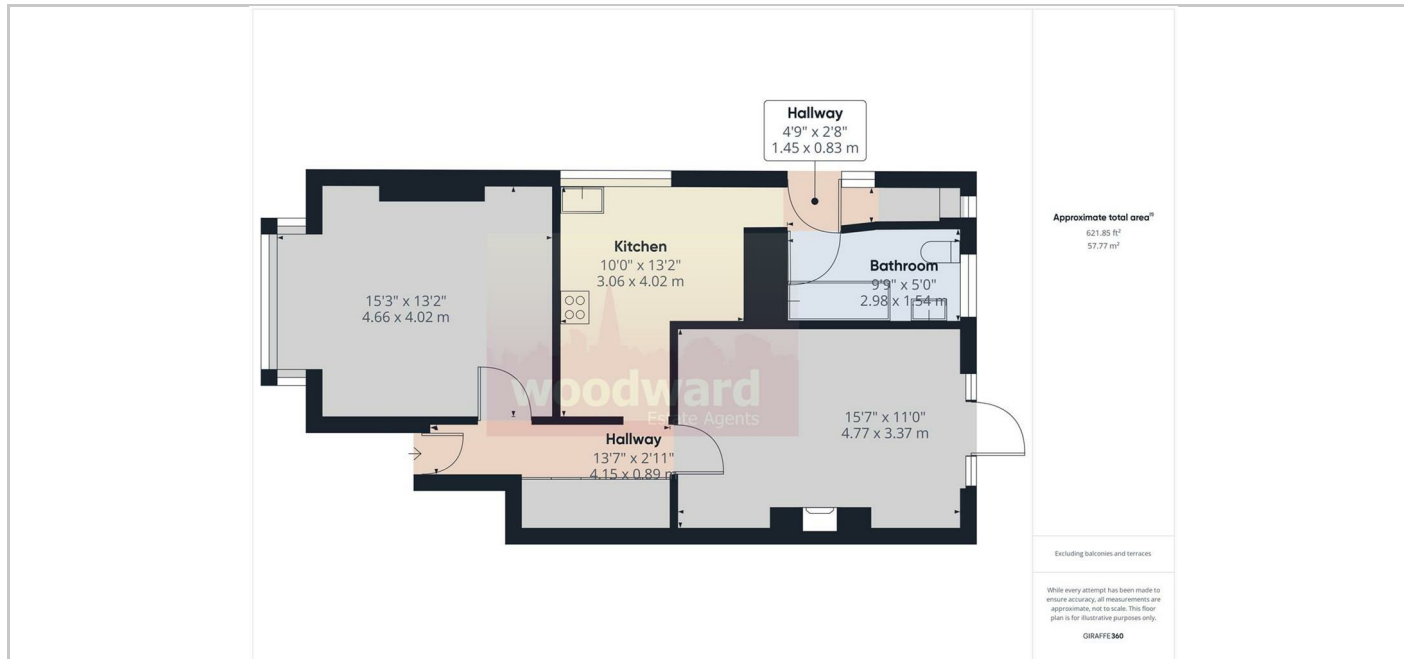
£1,400 Per month



- Spacious 1 Bedroom Ground Floor Maisonette
- Fitted "L" Shaped Kitchen/Breakfast Room including Dish Washer
- Lounge with Door to Garden
- Modern Bathroom
- Off Street Parking
- Close to Metropolitan Line/BR Station
- Unfurnished

## THE PROPERTY

Available from 13th January Perfect for the commuter being close to Harrow on the Hill Metropolitan Line/BR station. A ground floor 1 bed flat with its own private garden. Close to Harrow's Town Centre shopping & leisure facilities. The flat comprises of a large bedroom, lounge with door to garden, L shaped kitchen/breakfast room and a bathroom. Parking to the front. Available unfurnished. Council Tax Band: C EPC Rating C72



## SITUATION

## Directions