



TO LET



Sudbury Hill, Harrow on the Hill, HA1

£1,950

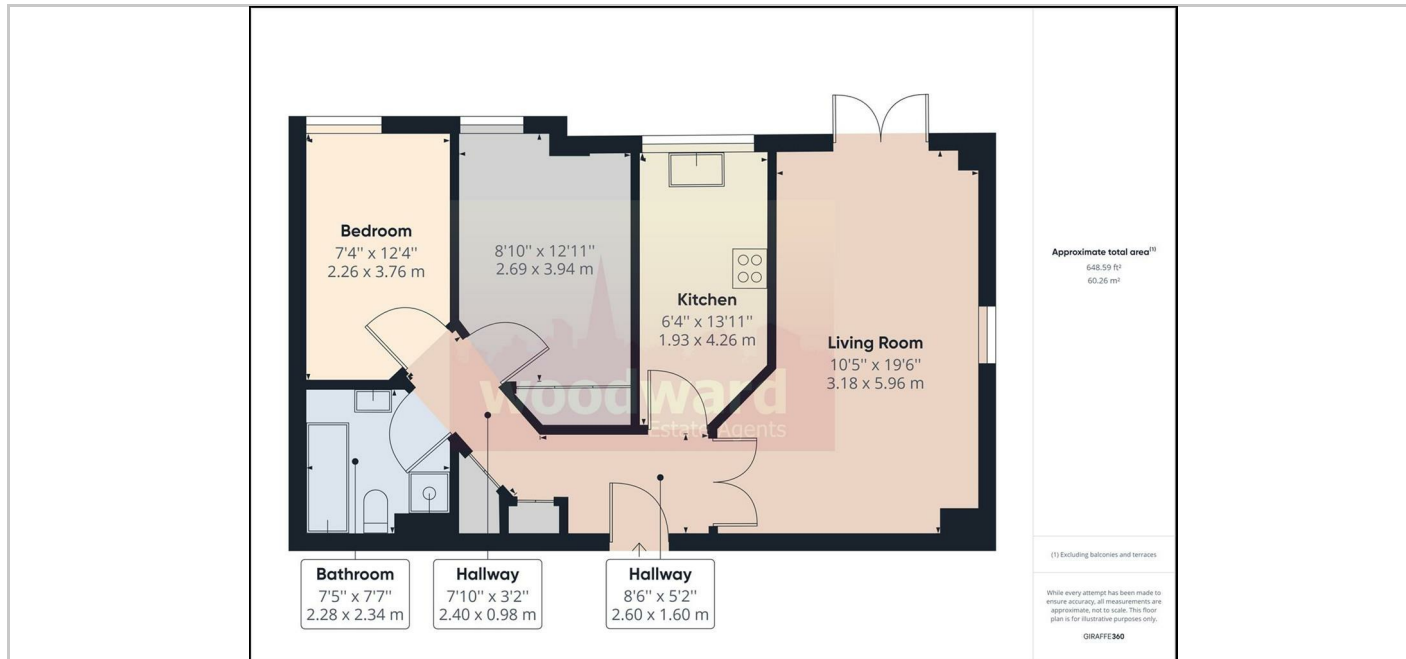


woodward
Estate Agents

- Gated Development
- Private Patio Garden
- Communal Gardens
- 2 Bedroom Ground Floor
- Allocated Parking
- Close to Public Transport

THE PROPERTY

Available from 16th October. Beautifully presented two bedroom ground floor flat, set within this stunning, gated development with Fitted kitchen including dish washer, Modern Bathroom with bath & separate Shower Cubicle, Own Private Terrace & Communal gardens, and allocated parking space. Situated close to the village and approximately 1 mile of Harrow Town Centre & Metropolitan/BR & Piccadilly Line Station & Waitrose is also close by. Available unfurnished Council Tax Band: G Energy Rating: D65



SITUATION

Directions