



TO LET



Ashbourne Avenue, Harrow, HA2

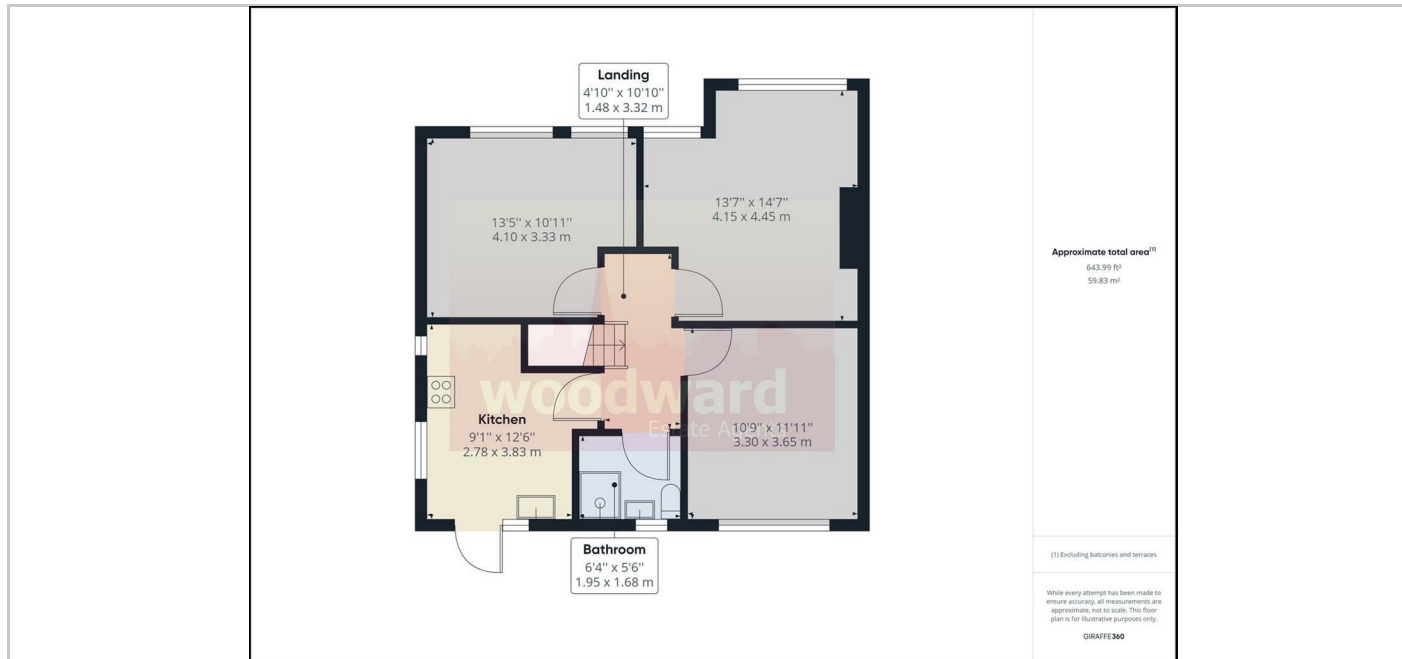
£1,900



- Available Now
- 2 Double Bedrooms First Floor Maisonette
- Summer House
- New Carpets & Flooring
- 10 minutes to Piccadilly Line Station & Waitrose
- Newly Refurbished
- Direct Access to Own Patio Garden
- Brand New Kitchen/Breakfast Room & Shower Room
- Unfurnished
- 1 mile to Harrow Town Centre

## THE PROPERTY

Available now. A newly refurbished to a high specification 2 double bedroom first floor maisonette with direct access to it's own patio garden and summer house with power and overlooking open fields. Features include large lounge & separate newly fitted Kitchen/Breakfast Room & Shower Room and new carpets & flooring & loft with access for storage. Situated in a cul-de-sac close to Waitrose & Piccadilly Line Station. 1 mile of Town Centre & Harrow on the Hill Metropolitan Line/BR station. Available unfurnished Council Tax Band: C EPC Rating



## SITUATION

## Directions