



TO LET



Mount Park Road, Harrow on the Hill, HA1

£1,250

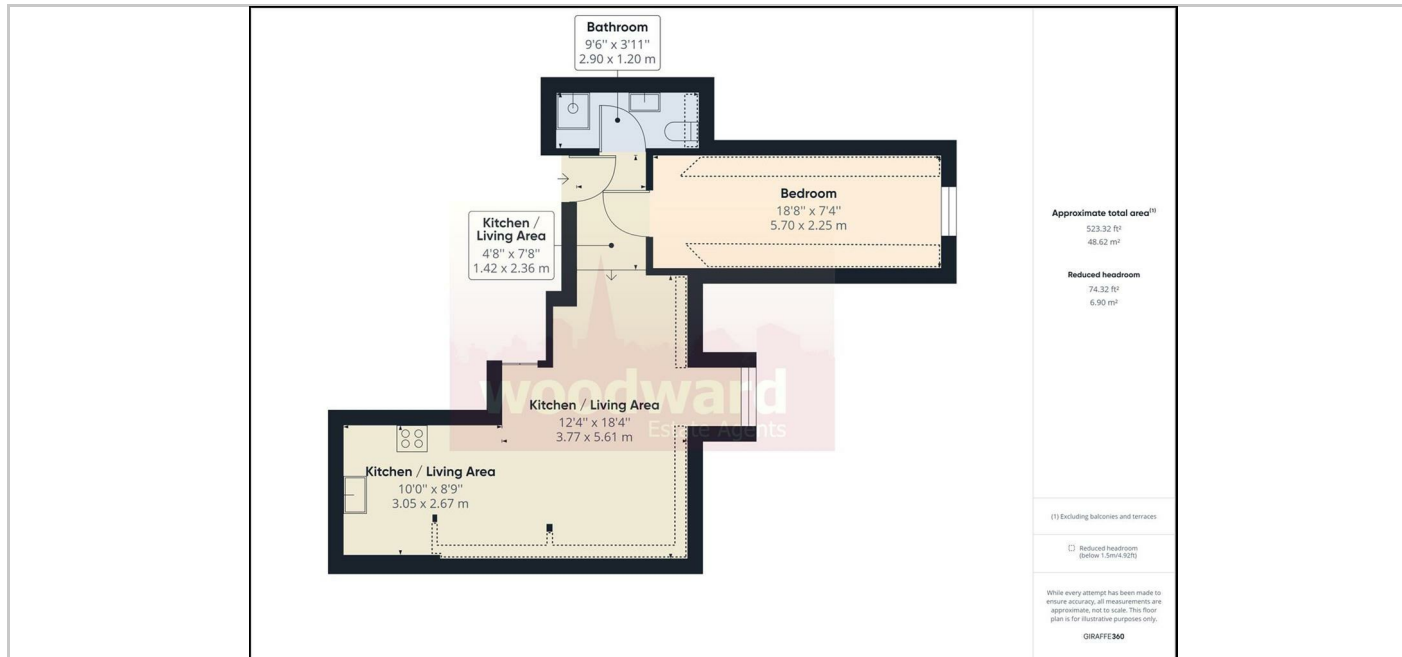


woodward
Estate Agents

- 1 bedroom second floor (no lift)
- L shaped open plan living Area
- Modern Kitchen
- Shower Room
- Close to Piccadilly Line
- 1 mile of Metropolitan Line
- Off Street Parking
- Part Furnished

THE PROPERTY

Available from 5th October. A one bedroom 2nd floor flat (no lift) located in an exclusive private estate with beamed eaves ceilings, L shaped living area, modern open plan kitchen and shower room. Close to Piccadilly Line, Waitrose and approx 1 mile from Harrow Centre with its excellent shopping facilities & Metropolitan Line station. The property has access to the communal garden & off street parking. Available part furnished. Council Tax Band: C. EPC rating: D64



SITUATION

Directions