



Victoria Terrace, Harrow on the Hill, HA1

£2,100

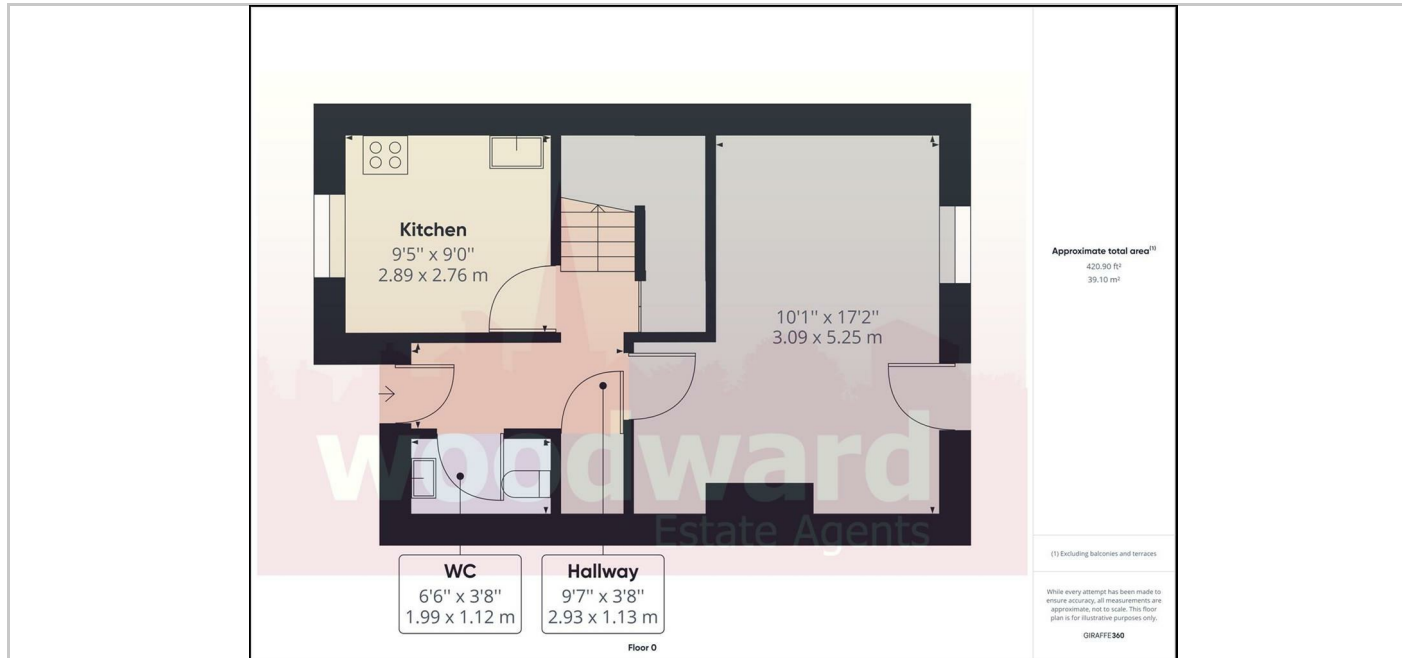


**woodward**  
Estate Agents

- 3 Bedrooms
- Downstairs Cloakroom
- Lounge/Dining Room
- Private patio rear garden
- Close to Metropolitan Line/BR and Piccadilly Line stations
- 2 Bathrooms
- Fitted Kitchen
- Allocated Parking Space
- Unfurnished

## THE PROPERTY

Available end of September a spacious 3 bedroom, 2 bathroom end of terrace cottage arranged over three floors and located in a quiet cul de sac in the heart of historic Harrow on the Hill Village yet within walking distance of all of Harrow's excellent shopping facilities & Metropolitan Line/BR station and also Piccadilly Line & Waitrose. Outside is an easy to maintain patio garden and allocated parking space. Available unfurnished end of Sept. Council Tax Band: F EPC Rating D59



## SITUATION

## Directions