



TO LET



Victoria Terrace, Harrow on the Hill, HA1

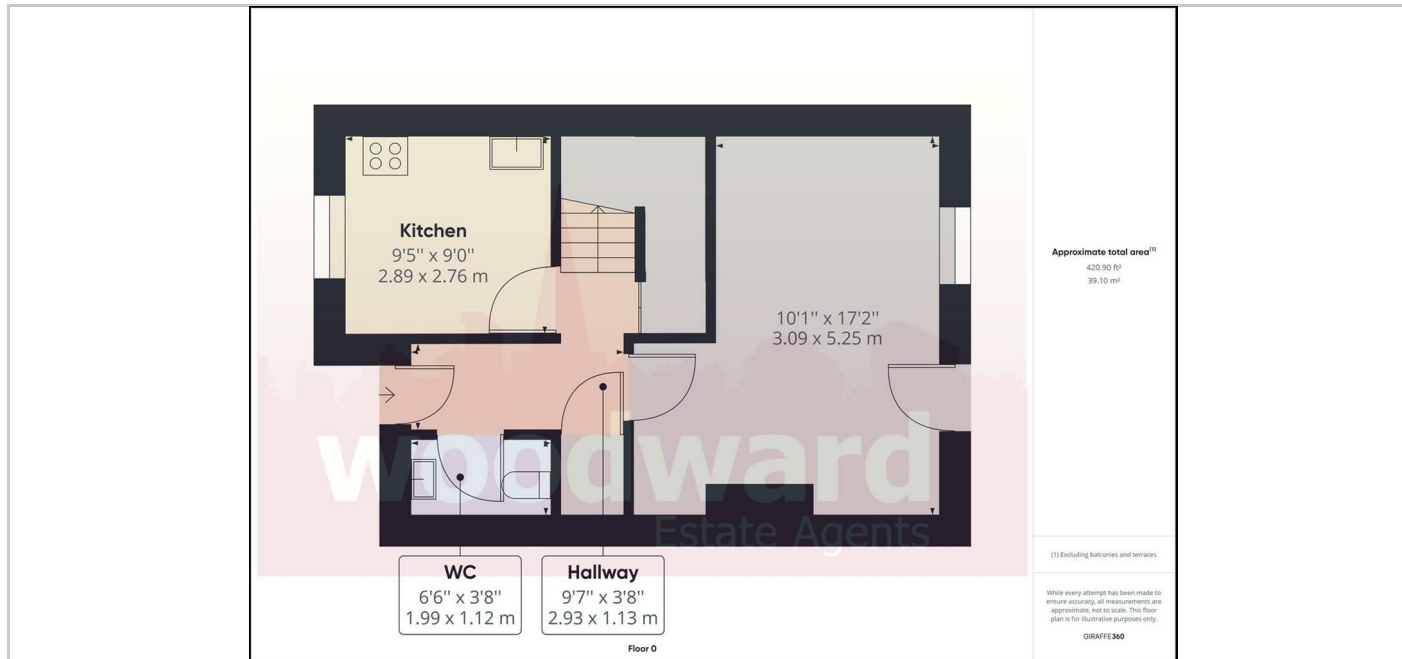
£2,250 Per month



- 3 Bedrooms
- 2 Bathrooms
- Downstairs Cloakroom
- Fitted Kitchen
- Lounge/Dining Room
- Allocated Parking Space
- Private patio rear garden
- Unfurnished
- Close to Metropolitan Line/BR and Piccadilly Line stations

THE PROPERTY

Available from 20th March. A spacious 3 bedroom, 2 bathroom end of terrace cottage arranged over three floors and located in a quiet cul de sac in the heart of historic Harrow on the Hill Village yet within walking distance of all of Harrow's excellent shopping facilities & Metropolitan Line/BR station and also Piccadilly Line & Waitrose. Outside is an easy to maintain patio garden and allocated parking space. Available unfurnished Council Tax Band: F EPC Rating D59



SITUATION

Directions