



TO LET

Sudbury Hill, Harrow on the Hill, HA1

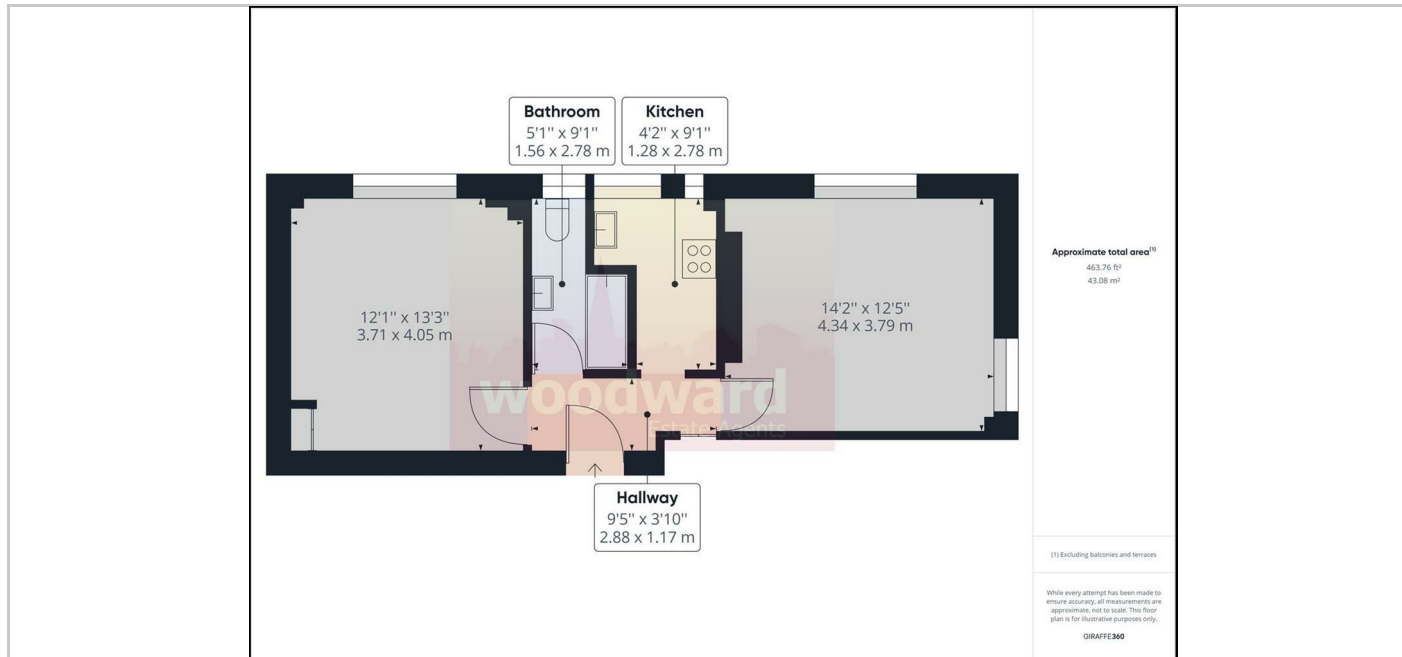
£1,350 Per month



- 1 bedroom First Floor
- Double Glazing
- Communal Garden
- Mostly Unfurnished
- Fitted Kitchen with Gas Hob
- Residents Permit Parking
- Tennis Court
- Close to Public Transport

THE PROPERTY

Available NOW. Set within the popular Herga Court development, this bright and spacious one bedroom first floor flat close to Sudbury Hill Piccadilly Line/British Rail and local bus routes or approximately 1 mile from Harrow on the Hill's Metropolitan Line Station/British Rail and excellent shopping facilities. With residents permit parking, tennis courts and communal garden. Mostly unfurnished. Council Tax Band: C Energy Rating: C74



SITUATION

Directions