



TO LET



Victoria Terrace, Harrow on the Hill, HA1

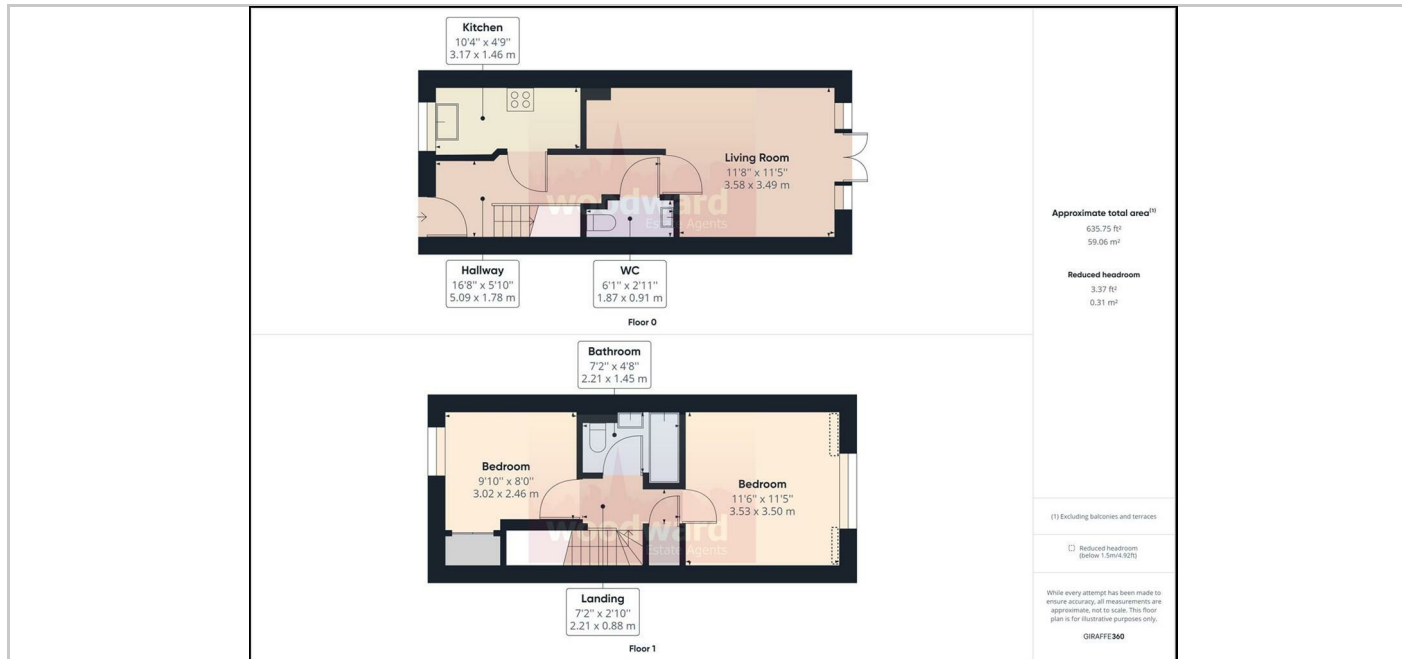
£1,900



- Fitted Kitchen with Gas hob
- Family Bathroom
- Allocated Parking Space
- Close to Metropolitan/BR Station
- Mostly Unfurnished
- Downstairs Cloakroom
- Lounge/Dining Room
- Secluded Walled Patio Garden
- Close to Piccadilly Line Line Station
- Shops and Amenities near by

THE PROPERTY

Available 17th August. Built in 2007, Beautifully presented 2 bedroom cottage with lounge/dining room, modern fitted kitchen with gas hob and cloakroom, & 2 double bedrooms and bathroom on the first floor. Outside is a secluded walled patio garden and has an allocated parking space. Located in a quiet cul de sac close to the Village Green & close to Harrow's Town centre and Metropolitan Line/BR station. Piccadilly Line & Waitrose are also close by Available mostly unfurnished. Council Tax Band E. EPC Rating: C73



SITUATION

Directions