



TO LET

Sudbury Hill, Harrow on the Hill, HA1

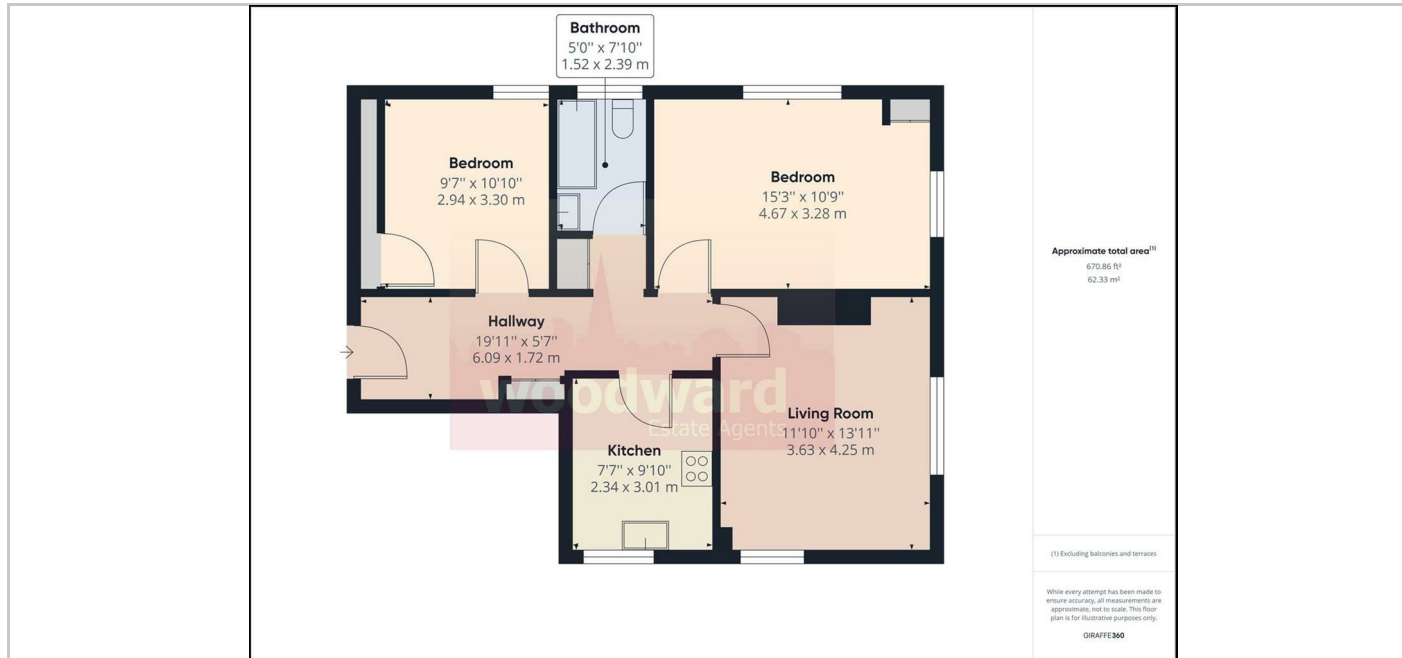
£1,700 Per month



- Upper Ground Floor
- Modern Fitted Kitchen
- Fitted Wardrobes
- Permit Parking
- Tennis Court
- 2 Double Bedroom
- Lounge/Dining Room
- Furnished
- Close to Public Transport
- Communal Garden

THE PROPERTY

A bright and spacious 2 double bedroom upper ground floor flat with features including Modern Fitted Kitchen, Lounge/Dining Room, Fitted Wardrobes, Communal Gardens, Permit Parking and use of Tennis Courts. Ideally located for Sudbury Hill Piccadilly line station, British Rail and local bus routes and approximately 1 mile of Harrow's excellent Town Centre shopping facilities and Metropolitan Line/BR station. Available Part Furnished from 27th January Council Tax Band: D EPC Rating: D68



SITUATION

Directions