



Harrow View, Harrow, HA1

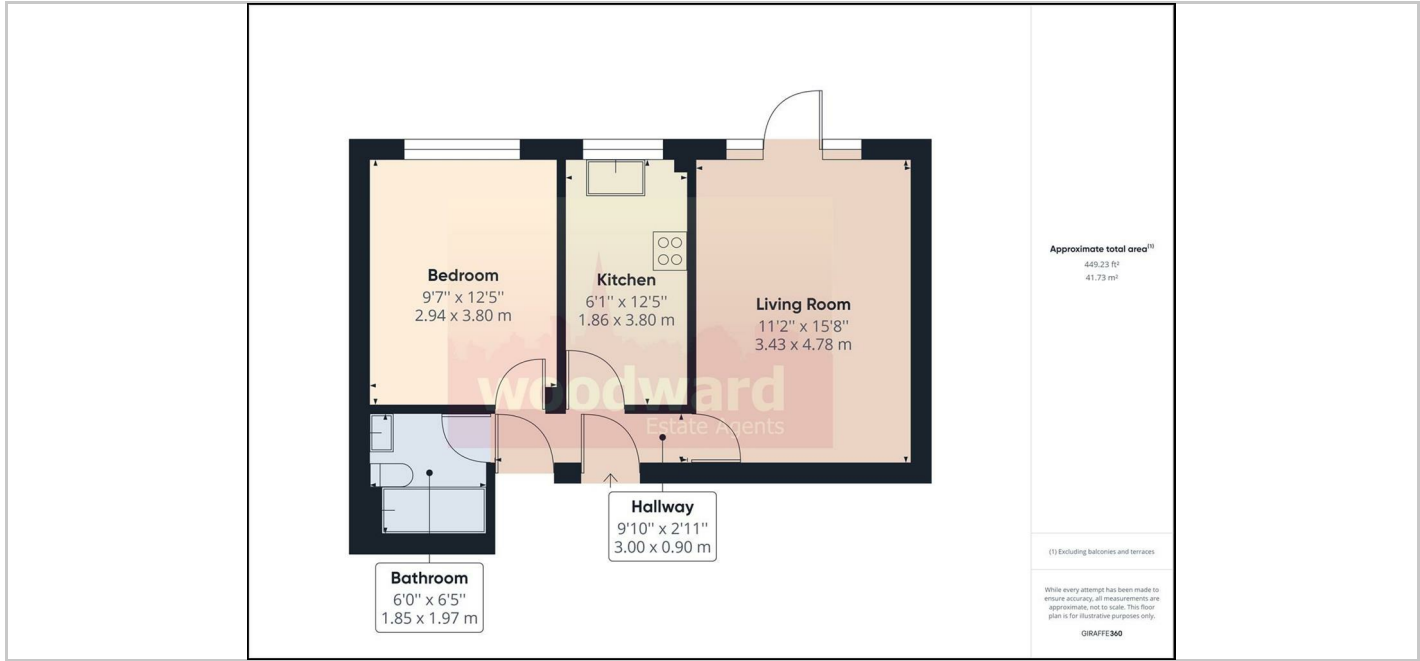
£1,300





THE PROPERTY

Perfect for the Summer, an attractive and spacious one bedroom ground floor flat with direct access to communal gardens. Perfect for somebody requiring easy access to Harrow on the Hill's Metropolitan line station & Harrow & Wealdstone Overground and Bakerloo station. Generous room sizes, Gated resident's parking and available from 11th April Unfurnished Council Tax Band: C. EPC Rating C78



SITUATION

Directions